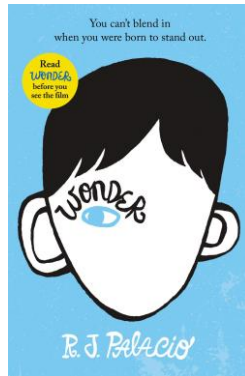


Wingrove Primary School

What we are covering this term:

English: non-chronological reports; play scripts; recounts; modern fiction; poetry and books from our Literary Heritage. Our novel this term is 'Wonder' by R.J. Palacio.



Maths: place value; addition; subtraction; multiplication; and division methods.

Science: Earth and Space; materials and their properties.

Creative Curriculum: our foundation subjects will be interwoven into our topic question: **'Does adversity make us stronger?'** and will include studying natural disasters, (earthquakes and volcanic eruptions) as well as the Titanic disaster.

Additional Info

If you have any questions or concerns please do not hesitate to talk to us or make an appointment at the office.

To contact us by telephone: **0191 2735466 / 0191 2735842**
To contact us by email: **admin@wingrove.newcastle.sch.uk**
Follow us on Twitter at: **School - @WingrovePrimary**
For more information go to: **www.wingrove.newcastle.sch.uk**

Welcome
To
Year 5

2024/2025

Term Dates:

Wednesday 3rd September – Friday 20th December

Half Term:

Monday 28th October – Friday 1st November

Training Days:

Monday 3rd September, Tuesday 4th September,
Monday 4th November

Parents' Evenings:

Tuesday 15th October and Wednesday 16th October

Christmas Performance:

Friday 13th December, 9.30am

Welcome to Year 5

The members of our teaching team are:

| | |
|------------------------|-------------------------------|
| Phase Leader: | Ms West |
| Class teachers: | Miss Watling Mrs Hay |
| Support staff: | Miss Alderson Miss Hussain |

Organisation

- Doors open at **8:35am** and close at **8:45am**.
- Late arrivals must report to the office.
- **Lunch time** is from **12:00pm** until **1:00pm**
- **Home time** is at **3:15pm**

Uniform – All children are expected to wear:

- a white shirt or polo shirt
- dark grey or black trousers or skirt
- plain grey, black or white socks
- if worn, tights should be plain navy, grey or black
- a red or blue sweatshirt (purchase from the school office)
- black school shoes (not trainers)
- if worn, headscarves should be no longer than shoulder length, be plain and be black, blue or red.

Children should not wear jewellery

P.E. and Forest School is on a **Thursday**.

Children need to come to school in their red school P.E. t-shirt, black shorts or leggings, either a school hoodie or a plain black hoodie, and trainers from home.

All children need a named pair of wellies which we will keep in school to use for forest school.

Our Seven Golden Promises

1. We treat other people with care and understanding, just as we would like others to treat us.
2. We keep our hands and feet to ourselves.
3. We never tease or call people names to hurt or upset them.
4. We take good care of our own belongings and those of other people.
5. We look after our school and its equipment to keep it clean, tidy and safe.
6. We celebrate and welcome differences in others.
7. We stand up for people who face challenges.

Homework

Your child will be given homework every Tuesday. It is important for their learning that it is completed every week online. We are still continuing to use Seesaw as our main learning platform so please make sure that you and your child have a login.

Maths: Weekly Mathematics homework

Spellings: On spellingframe

Reading: Children will be expected to have their reading folder in school each day. Please read with your child at home.

Children will also complete a project-based homework task each term.

Clubs/Trips

Club and trip letters will be sent out separately.

Information will also be available in the school entrance hall and on the school website.